

OKLAHOMA DEPARTMENT OF TRANSPORTATION				
FED. ROAD DIST. NO.	STATE	PROJ. NO.	FISCAL YEAR	TOTAL SHEETS
	OKLA.			
DESCRIPTION		REVISIONS	DATE	

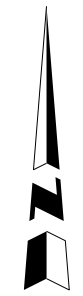
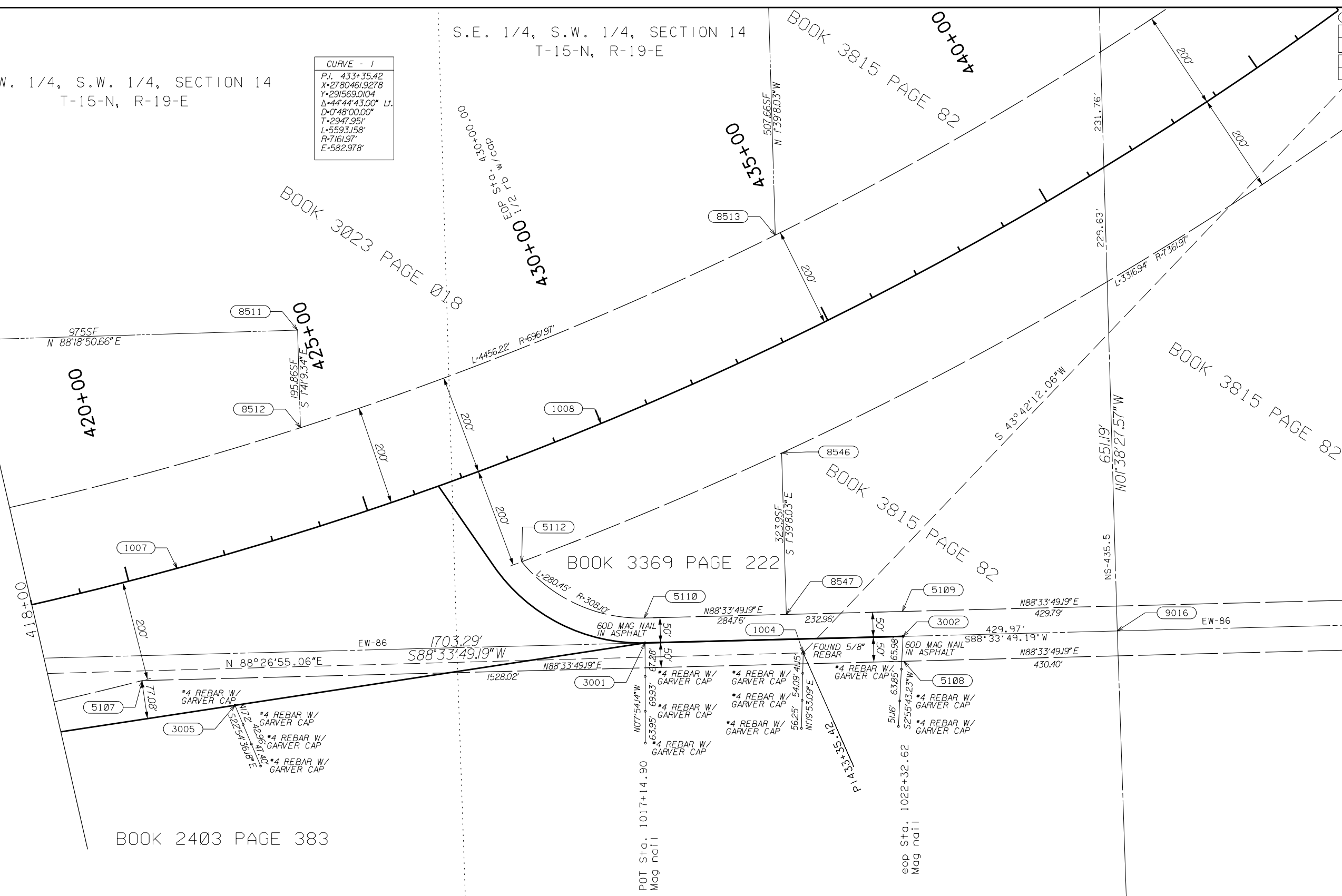
S.W. 1/4, S.W. 1/4, SECTION 14
T-15-N, R-19-E

CURVE - 1	
P.I.	433+35.42
X	-27804619278
Y	2915690104
Δ	44°44'43.00" Lt.
D	0°48'00.00"
T	2947.951'
L	5593.158'
R	7161.97'
E	582.978'

S.E. 1/4, S.W. 1/4, SECTION 14
T-15-N, R-19-E

N.E. 1/4, N.W. 1/4, SECTION 23
T-15-N, R-19-E

N.W. 1/4, N.W. 1/4, SECTION 23
T-15-N, R-19-E



SCALE
1" = 100'

OKLAHOMA DEPARTMENT OF TRANSPORTATION SURVEY DIVISION			
PLS	RLJ		
DRAWN	JAJ		
CHECKED	PED		
APPROVED	RLJ		
CREW	RJ, WW, LL, DN	SWO 4889	() PROJECT NO. 27956(04) SHEET NO. 24